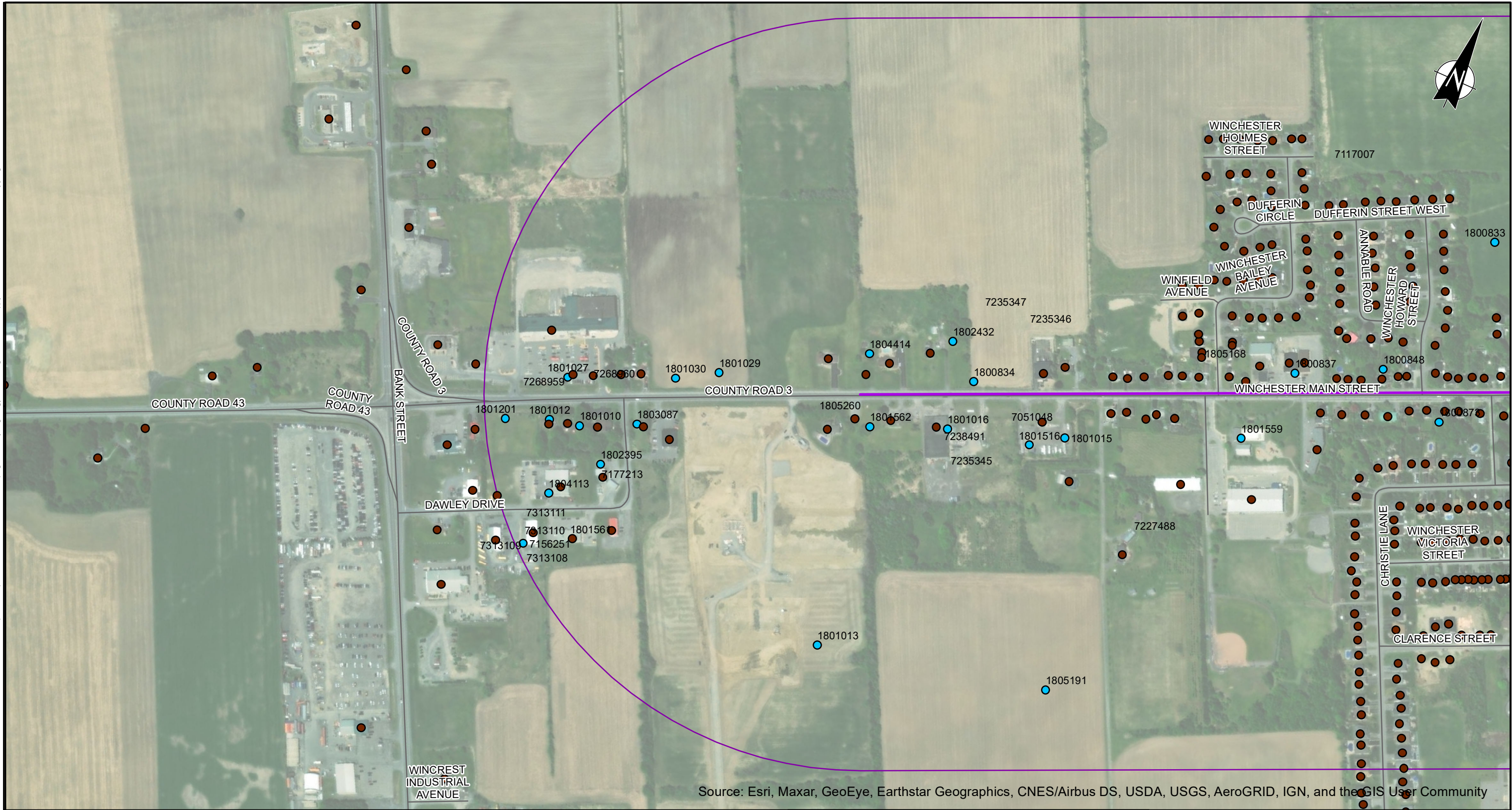


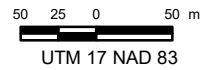
H:\30000-99999\32000-32899\32710 P - J.L. Richards and Associates North Dundas Water and Sewer Infrastructure Expansion\Reports & Memos\Main Street and Pumping Station\Hydrology\GIS\mxd\Figure x1 - Water Supply Records.mxd modified 2025-04-11 by jmagee



Source: Esri, Maxar, GeoEye, Earthstar Geographics, CNES/Airbus DS, USDA, USGS, AeroGRID, IGN, and the GIS User Community

LEGEND:

- Municipal Address
- 500 m buffer
- Sanitary Forcemain
- Roads
- MECP Well Records**
- Water Supply



J.L RICHARDS AND ASSOCIATES LIMITED

**MAIN STREET WATER PUMPING STATION
AND SANITARY FORCEMAIN**

WATER SUPPLY RECORDS

PROJECT No. 32710








THURBER ENGINEERING LTD.

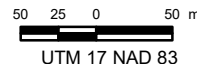
DESIGNED: AH	DRAWN: SM	APPROVED: AH
DATE: APRIL 2023	SCALE: 1:5,000	FIGURE NO. 1



Source: Esri, Maxar, GeoEye, Earthstar Geographics, CNES/Airbus DS, USDA, USGS, AeroGRID, IGN, and the GIS User Community

LEGEND:

-  Municipal Address
-  500 m buffer
-  Sanitary Force main
-  Roads
- MECP Well Records**
-  Water Supply



J.L RICHARDS AND ASSOCIATES LIMITED

MAIN STREET WATER PUMPING STATION
AND SANITARY FORCE MAIN

WATER SUPPLY RECORDS

PROJECT No. 32710



THURBER ENGINEERING LTD.

DESIGNED: AH	DRAWN: SM	APPROVED: AH
DATE: APRIL 2023	SCALE: 1:5,000	FIGURE NO. 1

H:\30000-39999\32000-32899\32710 P - J.L. Richards and Associates North Dundas Water and Sewer Infrastructure Expansion\Reports & Memoirs\Main Street and Pumping Station\Hydrology\GIS\mxd\Figure x2 - Water Supply Records.mxd modified 2023-04-11 by Imagee